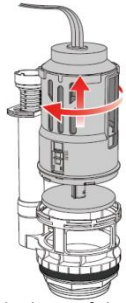


Note: Be sure to shut off the water supply and remove your toilet tank according to original manufacturer's instructions before proceeding with this installation.



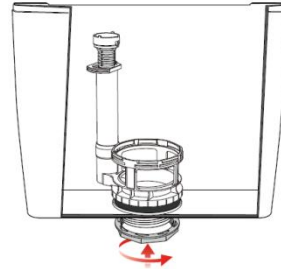
A. 3" Flush Valve Mechanism Installation



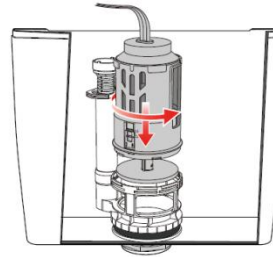
1. Hold the base of the flush valve and rotate the body counter-clockwise to remove from base.



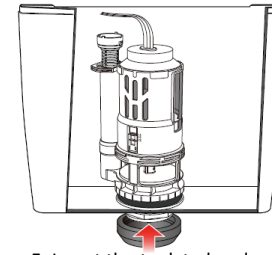
2. Remove the hex nut from flush valve base. Do not remove the seal.



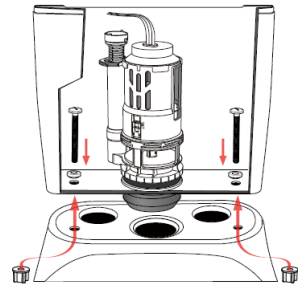
3. Insert the flush valve's base into the toilet tank. Screw on the hex nut.



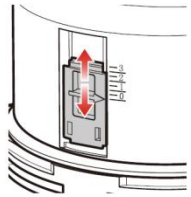
4. Take the body of the flush valve and set it into the base. Lock it in place by rotating clockwise.



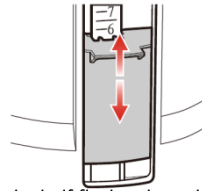
5. Insert the tank to bowl rubber gasket onto the flush valve's outlet bottom.



6. Re-attach tank to bowl with stainless steel bolts as shown. Your toilet may be different, follow re-attachment instructions for your model.



7. Adjust the full flush volume by sliding the red part up or down; when the red part is higher, the discharge water volume is less. Adjust the part down a bit until you are flushing just enough water to operate toilet.

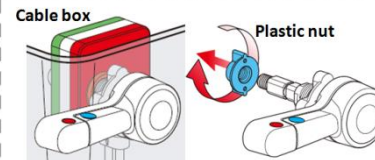


8. Adjust the half flush volume by sliding the blue buoy up or down. When the blue buoy is higher, the discharge water volume is less. Adjust the buoy down until you are flushing just enough water to operate toilet.

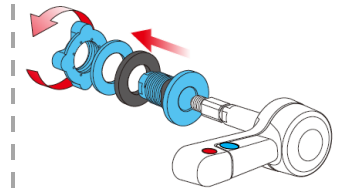


9. To adjust the height of the overflow pipe, slide the lock (a), then set the height of overflow pipe (b). Slide lock (a) back into place when done.

B. Flush Handle Installation



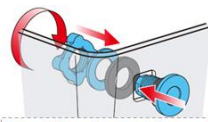
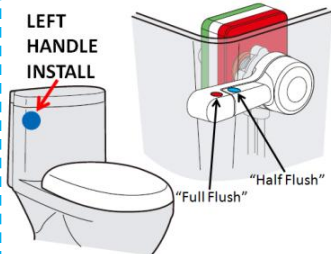
1. At the back of the cable box, unscrew the plastic nut. Now pull the handle assembly apart from the square mechanism.



2. Disassemble the handle assembly by unscrewing the plastic wing nut clockwise. (see picture).

LEFT HANDLE INSTALL

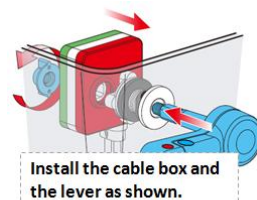
LEFT HANDLE INSTALL



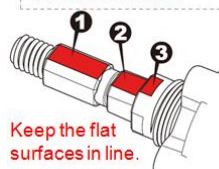
Install the plastic washer and nut in the order as shown.



Keep the flat surface level.



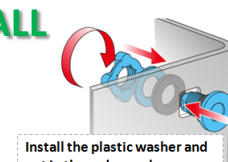
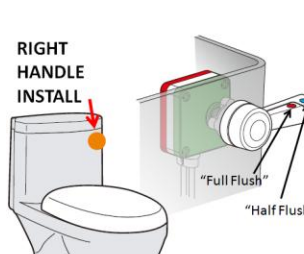
Install the cable box and the lever as shown.



Keep the flat surfaces in line.

RIGHT HANDLE INSTALL

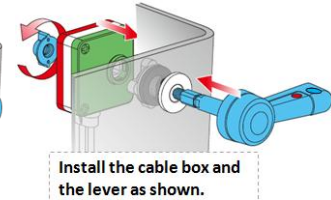
RIGHT HANDLE INSTALL



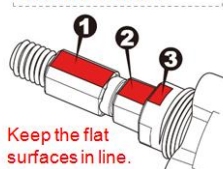
Install the plastic washer and nut in the order as shown.



Keep the flat surface level.



Install the cable box and the lever as shown.



Keep the flat surfaces in line.