



## PC TRICKLESAVER™

Reduce vampire power of PC peripherals

### OVERVIEW

The product reduces the vampire energy consumed by PC peripherals. The product connects to a PC via a standard USB connector and detects the power status of a PC via the USB port.

When a PC is powered the product will switch On all peripherals. Conversely when a PC is powered Off, the product will switch Off all peripherals. The product is easy to install and provides simple automation to reduce wasteful vampire energy consumption. The product is suitable for residential and workplace PC applications.

The product can be connected directly to equipment or connected to a standard electrical power-strip with a number of connected devices.

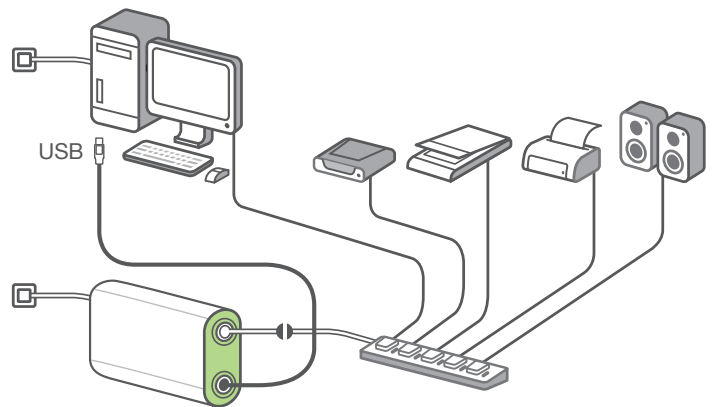
### KEY FEATURES

- In-built relay for switching off devices that consume vampire power.
- Rear mounting holes for wall, under desk mounting.

### PRODUCT WARRANTY

The product is supplied with a 1 year product warranty against defective manufacturing and components.

### PC APPLICATION



### ELECTRICAL SPECIFICATIONS

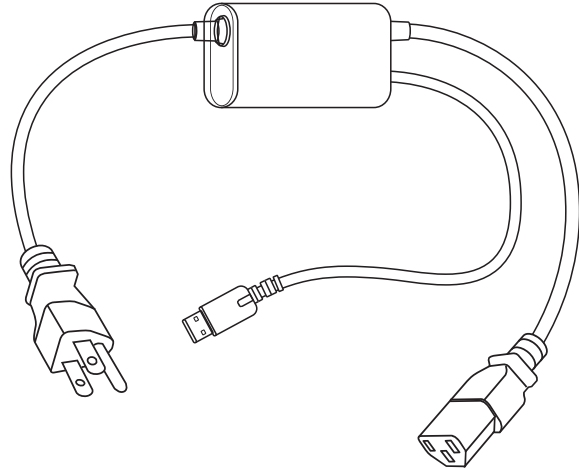
#### FOR INDOOR USE

<b>Voltage</b>	120 VAC +/- 10% 50Hz
<b>Relay Rating</b>	10A
<b>USB cord</b>	1.5 meters
<b>Power in cord</b>	0.3 meters
<b>Power out cord</b>	0.2 meter

### PHYSICAL SPECIFICATIONS

<b>Operating Temperature</b>	0° to 45°C
<b>Storage Temperature</b>	-10°C to +60°C
<b>Humidity</b>	5 to 90% N/C
<b>IP Rating</b>	IP20
<b>Dimensions</b>	112mm (L) 60mm (W) 34mm (H)
<b>Colour</b>	White

### ILLUSTRATION



### ORDERING INFORMATION

150PC-US-W      PC TrickleSaver, US

### REGULATORY APPROVALS

Conformity to product standards for safety and EMC.

**UL** (US & Canada)

**FCC**

**NOM**

**2002/95/EG** (RoHs);

**2002/96/EC** (WEEE)

**1999/5/EC** (RTTE)

